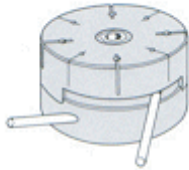
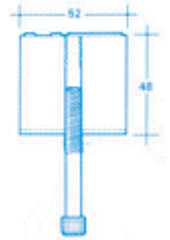


For temporary supports, handling, welding clamps, etc.

**Cube Clamp**

This base is used to support comparators, safety screens, lamps, tools, etc. A central M9 hole takes a threaded bolt, which when turned, eventually breaks the surface and lifts off the unit. The unit is overmoulded in black polyamide.



**Universal Clamp**

Cancellable force magnetic base. Its applications are similar to those for the Cube Clamp. The user makes it active or neutral by operating the side levers 90o relative to each other.

**Description:** This unit consists of two magnetic components, one fixed and one moving. Subject to their respective positions, both can combine to provide a considerable force, or to cancel each other out. An M10 thread hole accepts the requisite equipment. To avoid misuse, or to free space alongside, the side levers can be removed.



**JS 30**

Resistant to a number of chemical products and suitable for temperatures up to 100oC. The magnet is overmoulded in black polyamide. Pole pieces are protected against corrosion.

